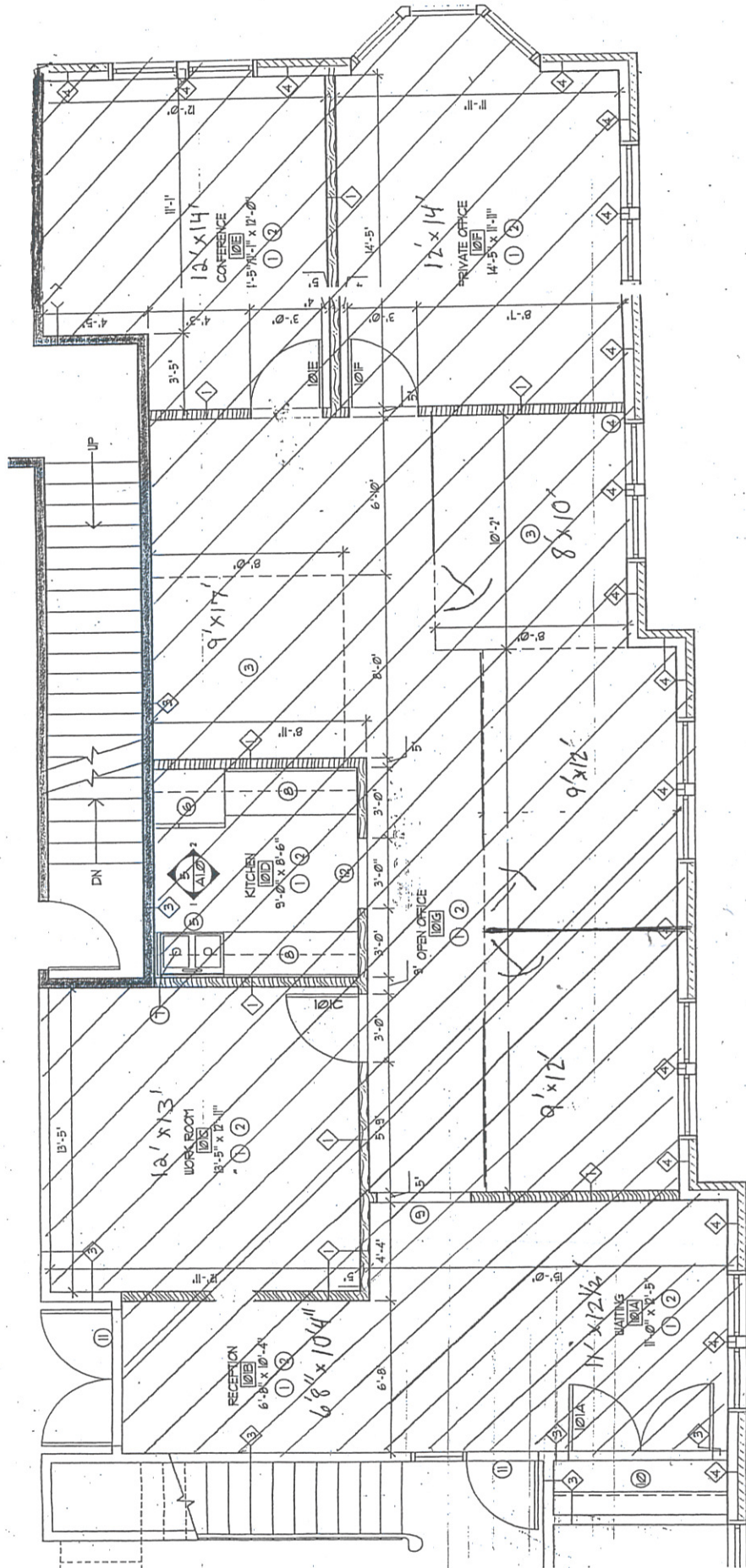


EXHIBIT "B"



SCALE: 1/4"=1'-0"

2 PARTIAL FIRST FLOOR PLAN

GLENWOOD EXECUTIVE CENTRE III, LLC
 15400 W. Capitol Drive, Brookfield, WI 53005
 1741-Rentable Sq/Ft First Floor Suite 105

- *6 Private Offices
- *Attractive Reception Area
- *Kitchenette
- *Common area w/elevator & 4 baths
- *Bay Window
- *Cherry Woodwork
- *Utilities & Cleaning Included

CONTACT: KAY STYZA
 cell: (414) 333-4364